

ARTESIA DISTRIBUTION CENTER

2350 ARTESIA AVE., UNIT B

Fullerton, California

For Lease ± 25,536 SF



Building Features

- ± 2,500 SF of Office Space
- Large Staging Area
- 5 Dock High Loading Doors
- 1 Ground Level Loading Door
- ± 24' Warehouse Clearance
- Concrete Loading Apron
- 2:1,000 Parking Ratio
- 600 Amps Electrical Panel
- Fire Sprinklered
- Excellent Access to 5 & 91 Freeways
- 25 Miles to Port of Long Beach
- 25 Miles to Port of Los Angeles



SETH DAVENPORT

Executive Vice President
(714) 935-2376
sdavenport@voitco.com
Lic. #01413387

MITCH ZEHNER

Executive Vice President
(714) 935-2307
mzehner@voitco.com
Lic. #00882464

Voit
REAL ESTATE SERVICES

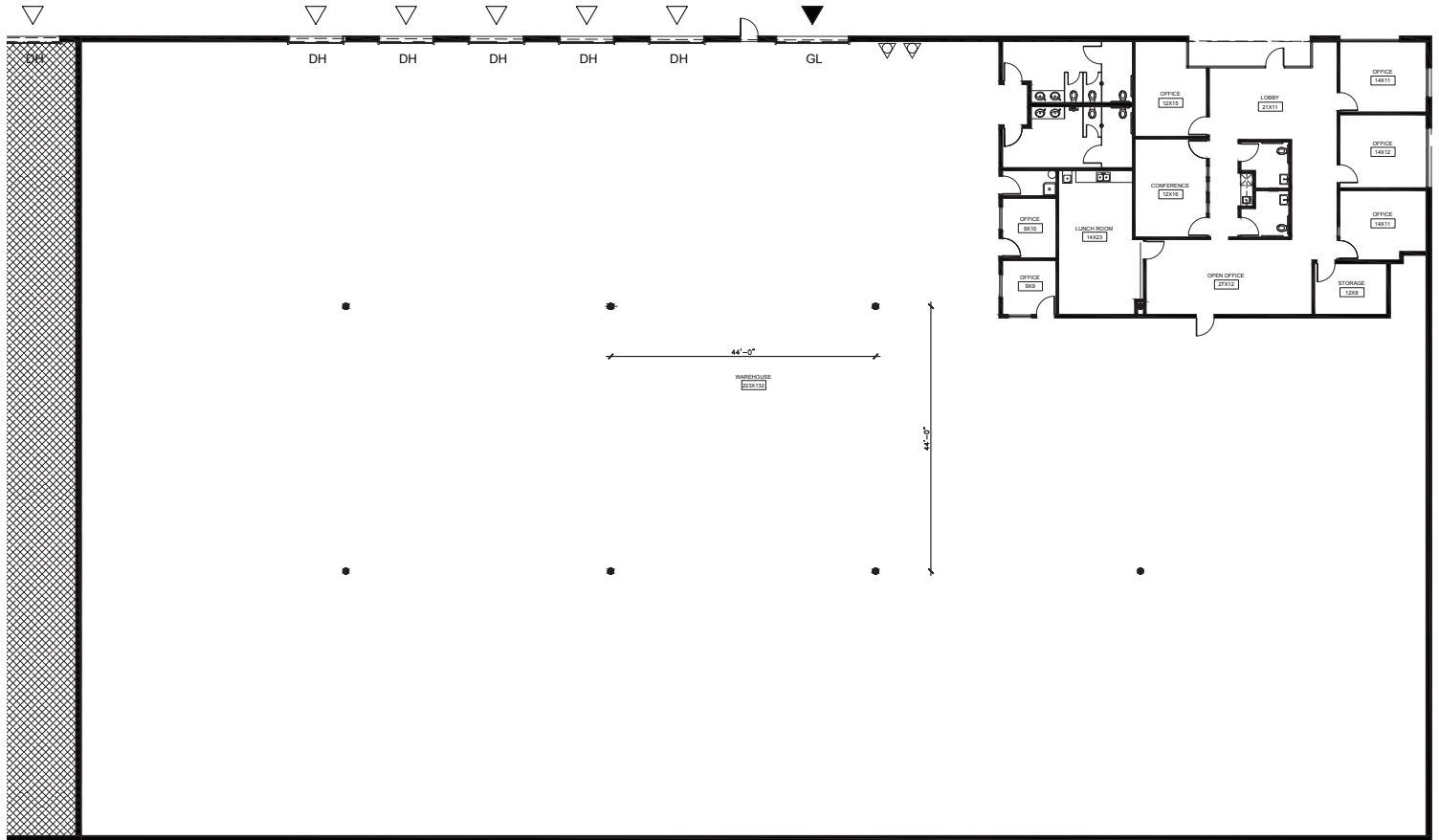
**THE ZEHNER
DAVENPORT**
INDUSTRIAL GROUP

ARTESIA DISTRIBUTION CENTER

2350 ARTESIA AVE., UNIT B

Fullerton, California

For Lease ± 25,536 SF



SETH DAVENPORT
Executive Vice President
(714) 935-2376
sdavenport@voitco.com
Lic. #01413387

MITCH ZEHNER
Executive Vice President
(714) 935-2307
mzehner@voitco.com
Lic. #00882464

Voit
REAL ESTATE SERVICES

**THE ZEHNER
DAVENPORT
INDUSTRIAL GROUP**

2400 E. Katella Avenue, Suite 750, Anaheim, California 92806 • 714.978.7880 • 714.978.8329 Fax
Licensed as Real Estate Salespersons by the DRE. The information contained herein has been obtained from sources we deem reliable.
While we have no reason to doubt its accuracy, we do not guarantee it. ©2018 Voit Real Estate Services, Inc. All Rights Reserved. License #01991785.

www.zehnerdavenport.com