

AVAILABLE FOR SALE

REAL PEOPLE, REAL SOLUTIONS®



CANYON COMMERCE CENTER

5439 E. LA PALMA AVENUE,
ANAHEIM, CA

**+/-10,013 SF
INDUSTRIAL UNIT**

Southern California's Premier
Real Estate Marketing Team

Voit
REAL ESTATE SERVICES

**THE ZEHNER
DAVENPORT**
INDUSTRIAL GROUP



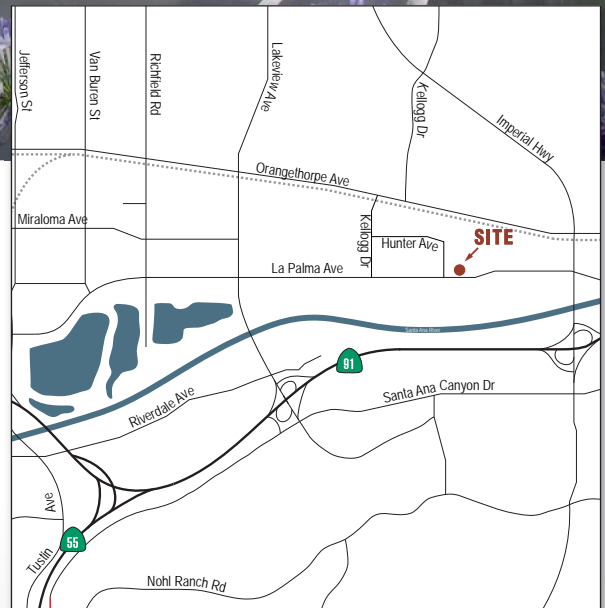
SETH DAVENPORT
Senior Vice President
714.935.2376
sdavenport@voitco.com
Lic#01413387



MITCH ZEHNER
Executive Vice President
714.935.2307
mzehner@voitco.com
Lic#00882464



ROB SOCCI
Executive Vice President
714.935.2314
rsocci@voitco.com
Lic#00936016



ANOTHER QUALITY PROJECT BY:



CAP|ROCK
PARTNERS

AVAILABLE




FOR SALE - 10,013 SF

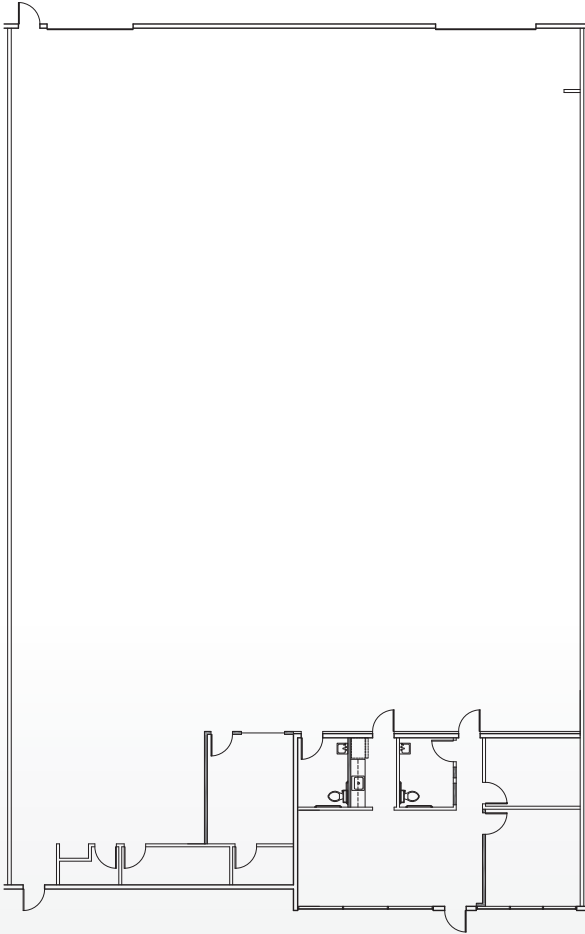
5439 E. LA PALMA AVE., ANAHEIM, CA

PROPERTY DETAILS:

- Located within Canyon Commerce Center - A multi-tenant business park
- +/- 1,165 Square Feet of Office Space
- 600 Amps Power
- 15' Warehouse Clearance
- 2 Ground Level Loading Doors
- Small Fenced Yard Area

LOCATION FEATURES:

- Low City of Anaheim Utility Costs
- Located within the City of Anaheim Enterprise Zone
- Located within the Anaheim Canyon Business Corridor
- Excellent Access to Riverside  Orange , & Costa Mesa  Freeways



ANOTHER QUALITY PROJECT BY:



Voit

REAL ESTATE SERVICES



SETH DAVENPORT
Senior Vice President
714.935.2376
sdavenport@voitco.com
Lic#01413387



MITCH ZEHNER
Executive Vice President
714.935.2307
mzehner@voitco.com
Lic#00882464



ROB SOCCI
Executive Vice President
714.935.2314
rsocci@voitco.com
Lic#00936016