

AVAILABLE FOR SALE

REAL PEOPLE, REAL SOLUTIONS®



CANYON COMMERCE CENTER

5411 E. LA PALMA AVENUE
ANAHEIM, CA

**+/-5,002 SF
INDUSTRIAL UNIT**

Southern California's Premier
Real Estate Marketing Team

Voit

REAL ESTATE SERVICES



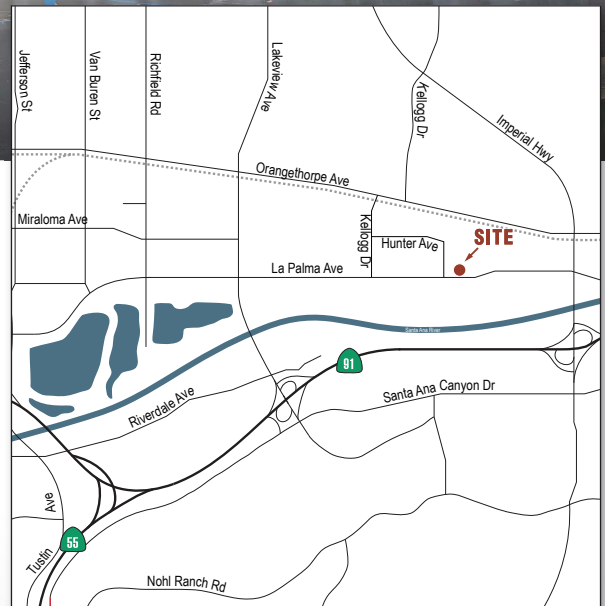
SETH DAVENPORT
Senior Vice President
714.935.2376
sdavenport@voitco.com
Lic#01413387



MITCH ZEHNER
Executive Vice President
714.935.2307
mzehner@voitco.com
Lic#00882464



ROB SOCCI
Executive Vice President
714.935.2314
rsocci@voitco.com
Lic#00936016



ANOTHER QUALITY PROJECT BY:



CAP|ROCK
PARTNERS

AVAILABLE




FOR SALE - 5,002 SF

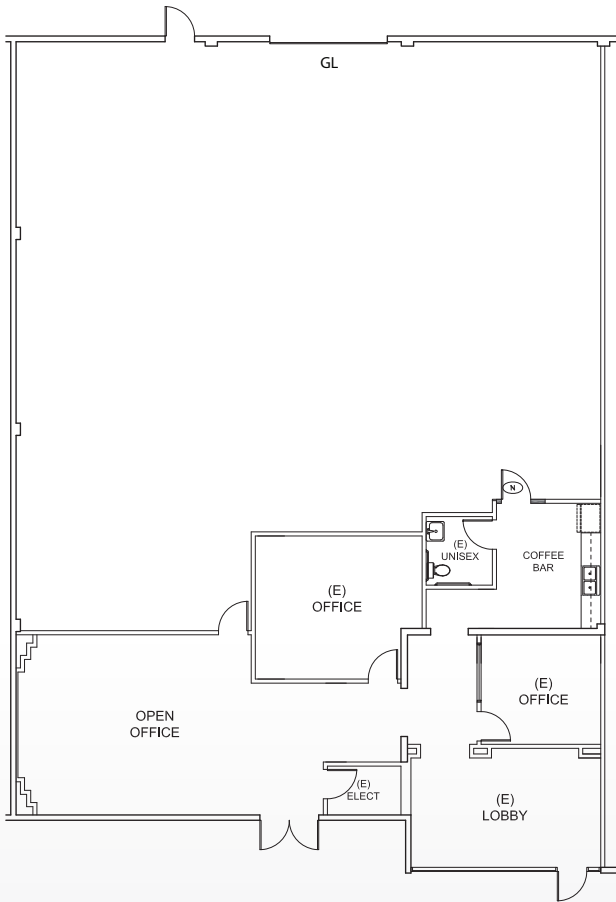
5411 E. LA PALMA AVE., ANAHEIM, CA

PROPERTY DETAILS:

- Located within Canyon Commerce Center - A multi-tenant business park
- +/- 1,620 Square Feet of Office Space
- Interior Renovations Completed
- 200 Amps Power
- 15'9" Warehouse Clearance
- 1 Ground Level Loading Door
- Possible HVAC / Temperature Controlled Warehouse

LOCATION FEATURES:

- Low City of Anaheim Utility Costs
- Located within the City of Anaheim Enterprise Zone
- Located within the Anaheim Canyon Business Corridor
- Excellent Access to Riverside  Orange , & Costa Mesa  Freeways



ANOTHER QUALITY PROJECT BY:



Voit

REAL ESTATE SERVICES



SETH DAVENPORT
Senior Vice President
714.935.2376
sdavenport@voitco.com
Lic#01413387



MITCH ZEHNER
Executive Vice President
714.935.2307
mzehner@voitco.com
Lic#00882464



ROB SOCCI
Executive Vice President
714.935.2314
rsocci@voitco.com
Lic#00936016

2400 E. Katella Avenue, Suite 750, Anaheim, CA 92806 • 714.978.7880 • 714.978.8329 Fax • Lic #01333376 | www.voitco.com

CORFAC
International

Licensed as a Real Estate Broker by the CA Bur of Real Estate. The information contained herein has been obtained from sources we deem reliable. While we have no reason to doubt its accuracy, we do not guarantee it. ©2015 Voit Real Estate Services, Inc. All Rights Reserved. Real People. Real Solutions.® is a registered trademark of Voit Real Estate Services.