

# Stadium Plaza Business Park

Deutsche  
Asset Management



## For Lease | ±21,859 Square Feet

### CHURCH SPACE AVAILABLE



### 1531 SINCLAIR STREET, ANAHEIM, CALIFORNIA



[www.StadiumPlazaBusinessPark.com](http://www.StadiumPlazaBusinessPark.com)

**Seth Davenport**

714.935.2376

[sdavenport@voitco.com](mailto:sdavenport@voitco.com)

Lic.#01413387





**Mitch Zehner**

714.935.2307

[mzehner@voitco.com](mailto:mzehner@voitco.com)

Lic.#00882464

### FEATURES

- Freestanding Existing Church Facility
- Fully Built-out Worship / Congregation Space
- ±14,141 Square Feet of 2-Story Offices, Classrooms, Day-care and Prayer Rooms
- Freeway Exposure
- 3 Ground Level Doors
- Parking Ratio ±2:1 / In Common
- 2,400 Amps 120/208 Volt Electrical
- 19' - 23' Warehouse Clear Height
- Low City of Anaheim Utility Costs
- Excellent Access to the , , ,  Freeways
- On Site Property Management
- Business Park Environment
- Reduced Net Expenses Based Upon Potential Users Non-Profit Tax Exemption

2400 E. Katella Avenue, Suite 750, Anaheim, CA 92806

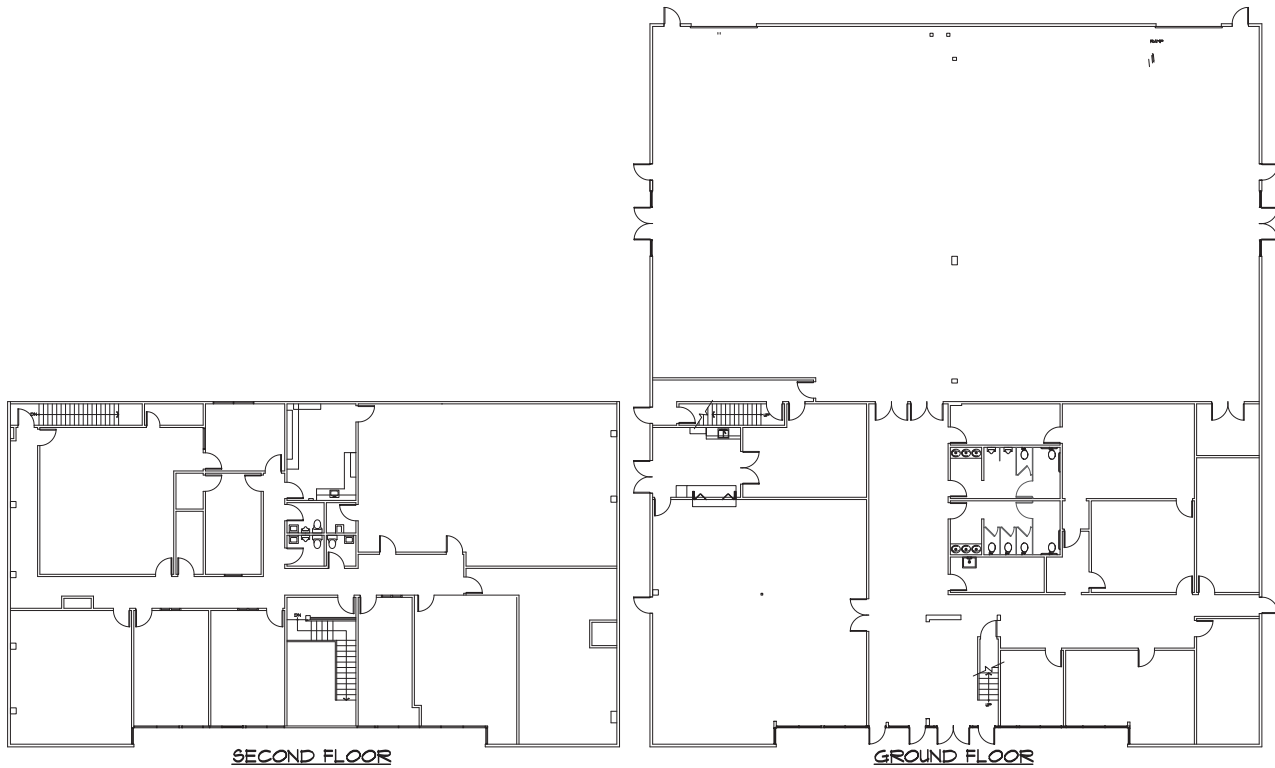
714.978.7880 Phone | 714.978.8329 Fax | Lic #01333376 | [voitco.com](http://voitco.com) | [zehnerdavenport.com](http://zehnerdavenport.com)

Licensed as a Real Estate Salesperson by the CA Bur of Real Estate. The information contained herein has been obtained from sources we deem reliable. While we have no reason to doubt its accuracy, we do not guarantee it. ©2017 Voit Real Estate Services, Inc. All Rights Reserved. Real People. Real Solutions.® is a registered trademark of Voit Real Estate Services. Lic.#01991785

**Voit**  
REAL ESTATE SERVICES

**THE ZEHNER  
DAVENPORT**  
INDUSTRIAL GROUP

# For Lease | ±21,859 Square Feet



**Seth Davenport**  
 714.935.2376  
 sdavenport@voitco.com  
 Lic.#01413387

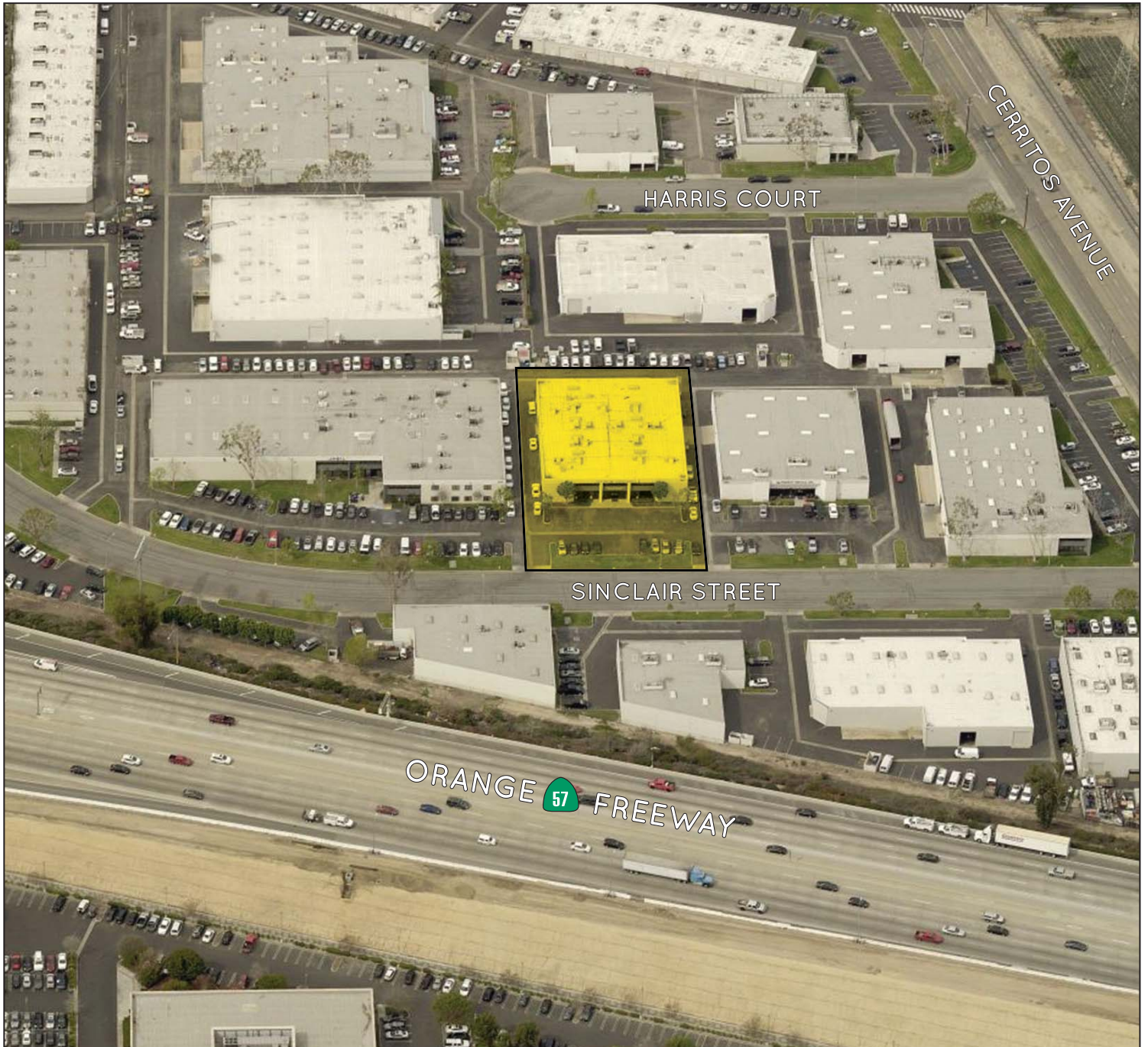
**Mitch Zehner**  
 714.935.2307  
 mzehner@voitco.com  
 Lic.#00882464

**Voit**  
 REAL ESTATE SERVICES

**THE ZEHNER  
 DAVENPORT**  
 INDUSTRIAL GROUP

2400 E. Katella Avenue, Suite 750, Anaheim, CA 92806  
 714.978.7880 Phone | 714.978.8329 Fax | Lic #01333376 | voitco.com | zehnerdavenport.com

# For Lease | ±21,859 Square Feet



**Seth Davenport**  
714.935.2376  
sdavenport@voitco.com  
Lic.#01413387

**Mitch Zehner**  
714.935.2307  
mzehner@voitco.com  
Lic.#00882464

**Voit**  
REAL ESTATE SERVICES

**THE ZEHNER  
DAVENPORT**  
INDUSTRIAL GROUP

2400 E. Katella Avenue, Suite 750, Anaheim, CA 92806  
714.978.7880 Phone | 714.978.8329 Fax | Lic #01333376 | [voitco.com](http://voitco.com) | [zehnerdavenport.com](http://zehnerdavenport.com)

Licensed as a Real Estate Salesperson by the CA Bur of Real Estate. The information contained herein has been obtained from sources we deem reliable. While we have no reason to doubt its accuracy, we do not guarantee it. ©2017 Voit Real Estate Services, Inc. All Rights Reserved. Real People. Real Solutions.® is a registered trademark of Voit Real Estate Services. Lic.#01991785