

BALL ROAD BUSINESS PARK

ANAHEIM, CALIFORNIA

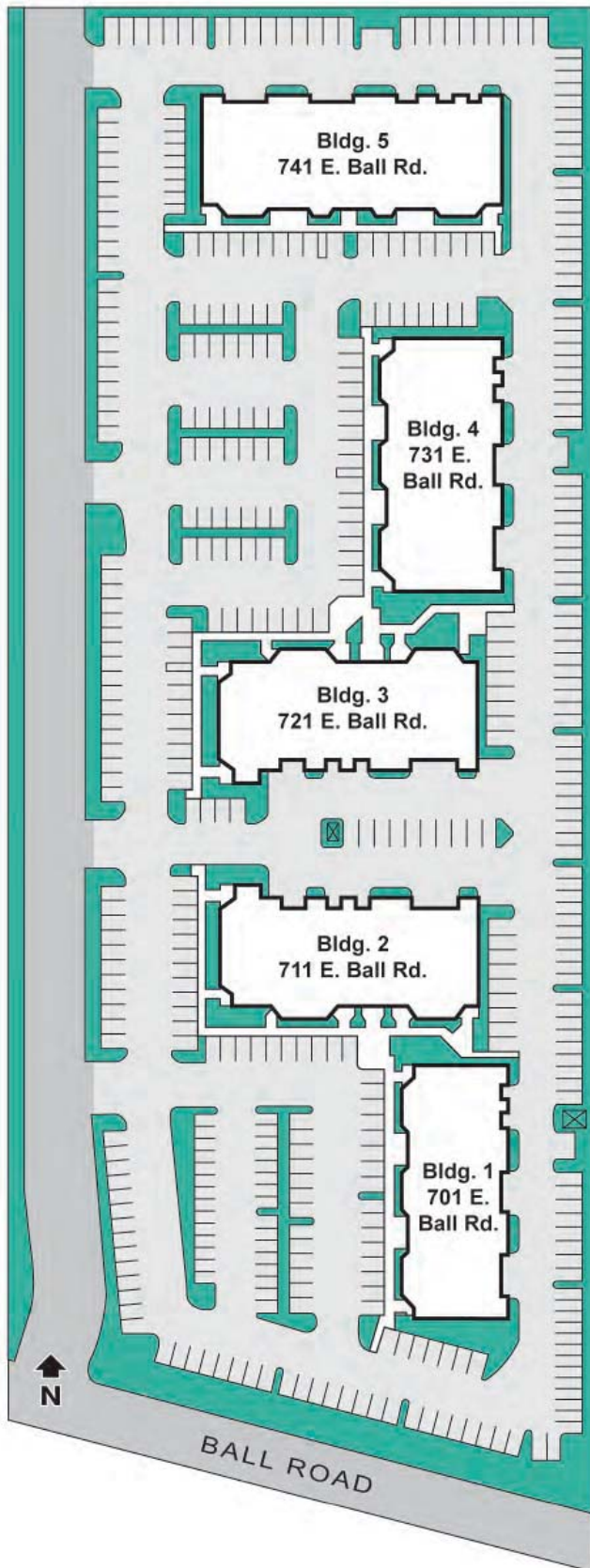


For further information, please contact:

Bryson Lloyd
blloyd@voitco.com
714.935.2312
Lic #019585158

Voit
REAL ESTATE SERVICES

**THE ZEHNER
DAVENPORT**
INDUSTRIAL GROUP



PROPERTY HIGHLIGHTS

- Premier North Orange County location
- 5-Two Story Industrial/Office/Flex Business Park
- Excellent Access to 57, 5, 91 & 22 Freeways
- Walking distance to restaurants, banks, train station and many other retail amenities
- Post Office on Site
- 4 : 1,000 Parking

BUILDING PARK FEATURES

Parking Ratio	4 : 1,000 SF
Clear Height	±9'
Total Building Size	114,984 SF
Year Built	1987
Water & Sewer	Anaheim Public Utilities
Gas Service	Southern California Edison
Electric Service	Anaheim Public Utilities
Telephone	SBC
Number of Buildings	5
Number of Units	39
Loading	Ground level in the rear
Fire Prevention	Wet pipe fire sprinkler system
Electrical	1200-1600 amp main switchgear with 120/240 volt, 3 phase, 4 wire service

FOR MORE INFORMATION CONTACT

Bryson Lloyd | Lic. #01958158
714.935.2312 | blloyd@voitco.com

Voit
REAL ESTATE SERVICES



2400 E. Katella Avenue, Suite 750
Anaheim, CA 92806

B A L L R O A D B U S I N E S S P A R K

A V A I L A B I L I T I E S

Building Address	Size SF	Office SF	GL Doors	Asking Rent	Comments
701 E. BALL ROAD					
Suite 200	±1,712	±1,712	0	\$0.90 MG PSF	5 private offices, 1 large conference room, small reception area and restroom. Ball Road frontage. Available now.
Suite 202	±1,712	±1,712	0	\$0.85 MG PSF	2 private offices, kitchenette, large open office area, private restroom. Available now.
741 E. BALL ROAD					
Suite 202	±1,970	±1,970	0	\$0.85 MG PSF	2 private offices, reception area, large open area and restroom. Available now.
Suite 204	±2,001	±2,001	0	\$0.85 MG PSF	3 private offices, large open area and restroom. Available now.

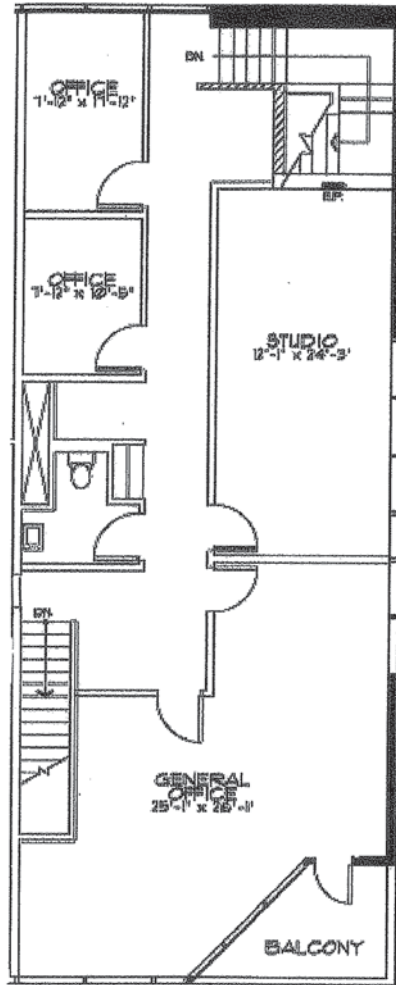
Note: Rental rate is structured at modified gross rate excluding janitorial and electrical. Common Area Maintenance fees are equal to \$0.08 per rental square foot per month.



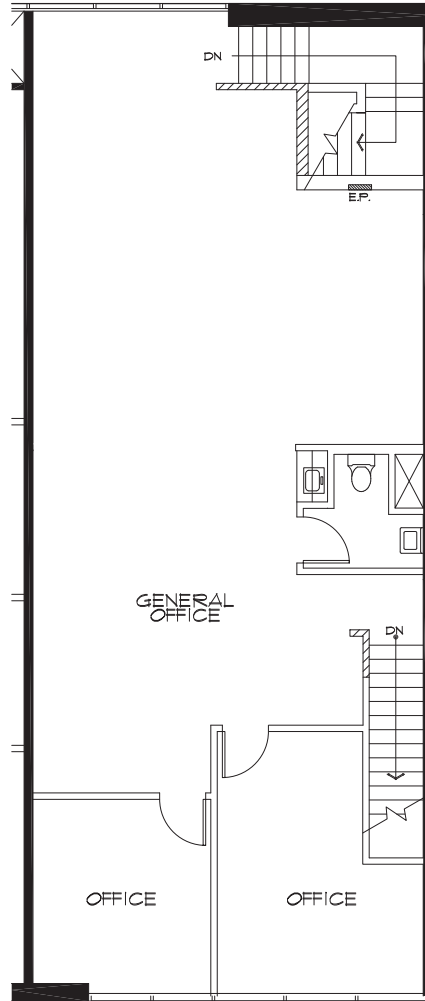
For further information, please contact:

Bryson Lloyd
 blloyd@voitco.com
 714.935.2312
 Lic #019585158



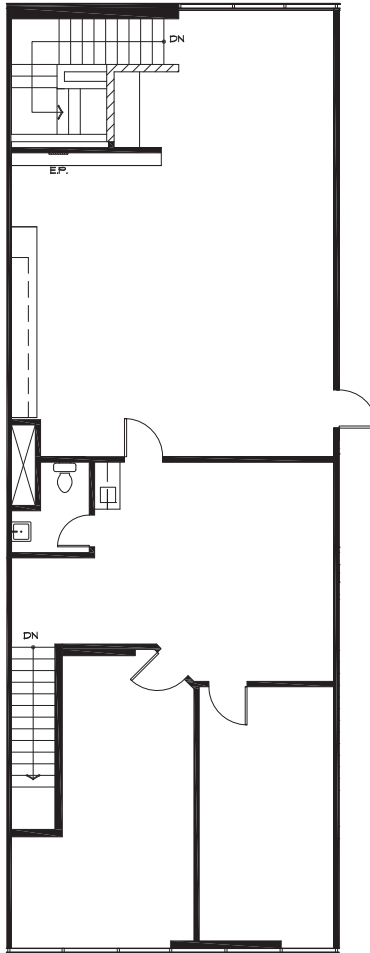


±1,712 SF
Office: ±1,712 SF
**Floorplans Not to Scale*

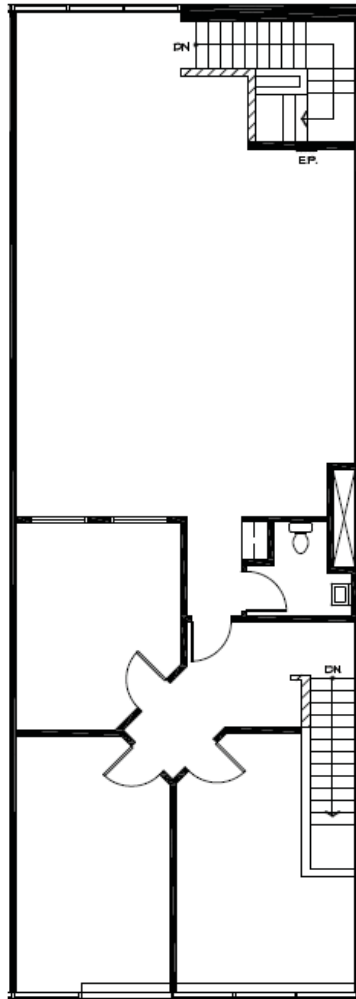


±1,712 SF
Office: ±1,712 SF

**Floorplans Not to Scale*



±1,970 SF
Office: ±1,970 SF
**Floorplans Not to Scale*



±2,001 SF
Office: ±2,001 SF
**Floorplans Not to Scale*