




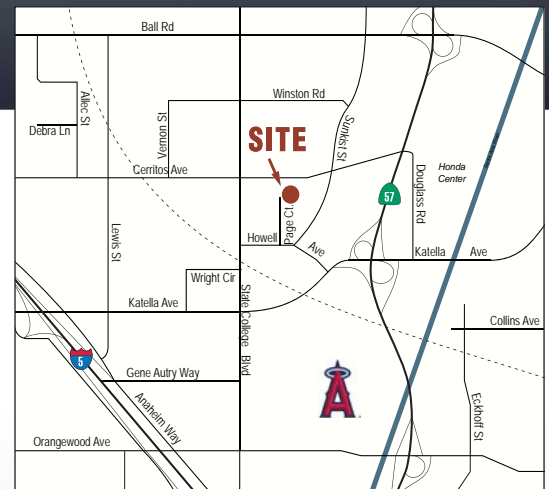
±98,058 SF

REAL PEOPLE, REAL SOLUTIONS®



AVAILABLE FOR SUBLEASE

- ±98,058 SF
- ±4,500 SF of Office
- Sublease Term thru 7/31/2022
- Tile Mile Stadium Location
- 22' Minimum Ceiling Clearance
- 2,000 Amps, 277/480 Volt
- 8 - Dock High Loading Doors
- 2 - GL Loading Doors
- City of Anaheim Power and Utilities
- Close to Ports of Long Beach
- Excellent Proximity to ,  &  Freeways



1540 PAGE COURT
ANAHEIM, CA

Voit

REAL ESTATE SERVICES

**THE ZEHNER
DAVENPORT**
INDUSTRIAL GROUP



SETH DAVENPORT
Senior Vice President
714.935.2376
sdavenport@voitco.com
Lic#01413387

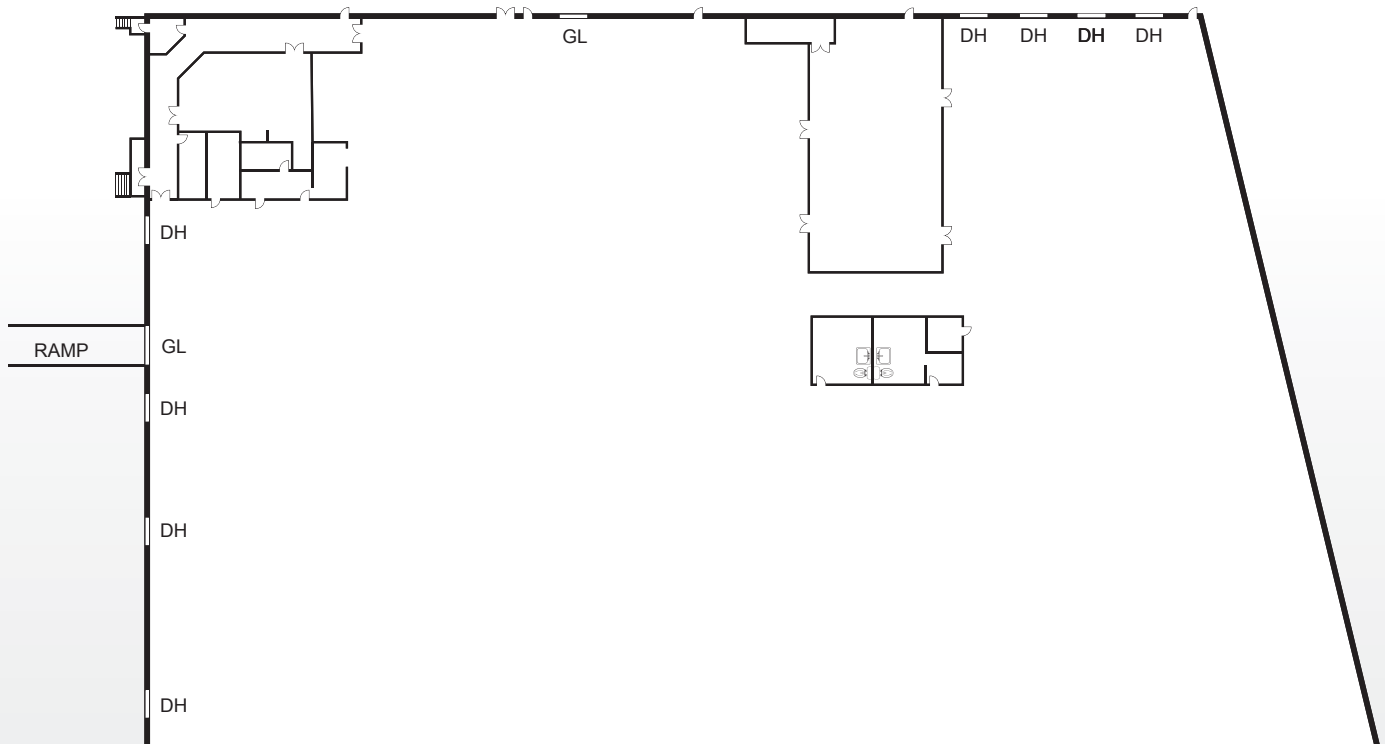


MITCH ZEHNER
Executive Vice President
714.935.2307
mzehner@voitco.com
Lic#00882464

Southern California's Premier
Real Estate Marketing Team

AVAILABLE FOR SUBLEASE - ±98,058 SF

1540 PAGE COURT, ANAHEIM, CA



SETH DAVENPORT
Senior Vice President
714.935.2376
sdavenport@voitco.com
Lic#01413387



MITCH ZEHNER
Executive Vice President
714.935.2307
mzehner@voitco.com
Lic#00882464

Voit
REAL ESTATE SERVICES

**THE ZEHNER
DAVENPORT**
INDUSTRIAL GROUP