

+/-15,647 SF INDUSTRIAL BUILDING

REAL PEOPLE, REAL SOLUTIONS®

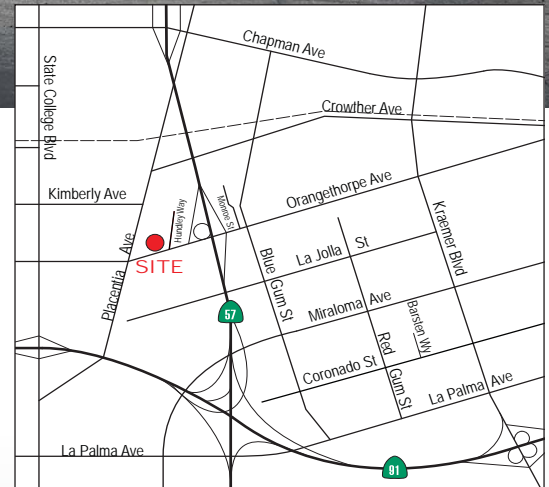
ORANGETHORPE FRONTAGE



AVAILABLE FOR LEASE

735 W. ORANGETHORPE AVENUE
PLACENTIA, CA

- ±2,687 SF of 2-Story Office
- 19' Warehouse Height
- 2 Ground Level Loading Doors
- 400 Amps Power (verify)
- **FENCED YARD**
- **ORANGETHORPE AVENUE FRONTAGE / SIGNAGE**
- Immediate Access to Orange (57) and Riverside (91) Freeways



Southern California's Premier
Real Estate Marketing Team

Voit
REAL ESTATE SERVICES

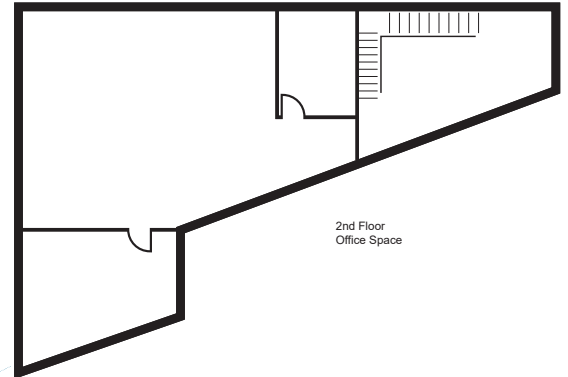
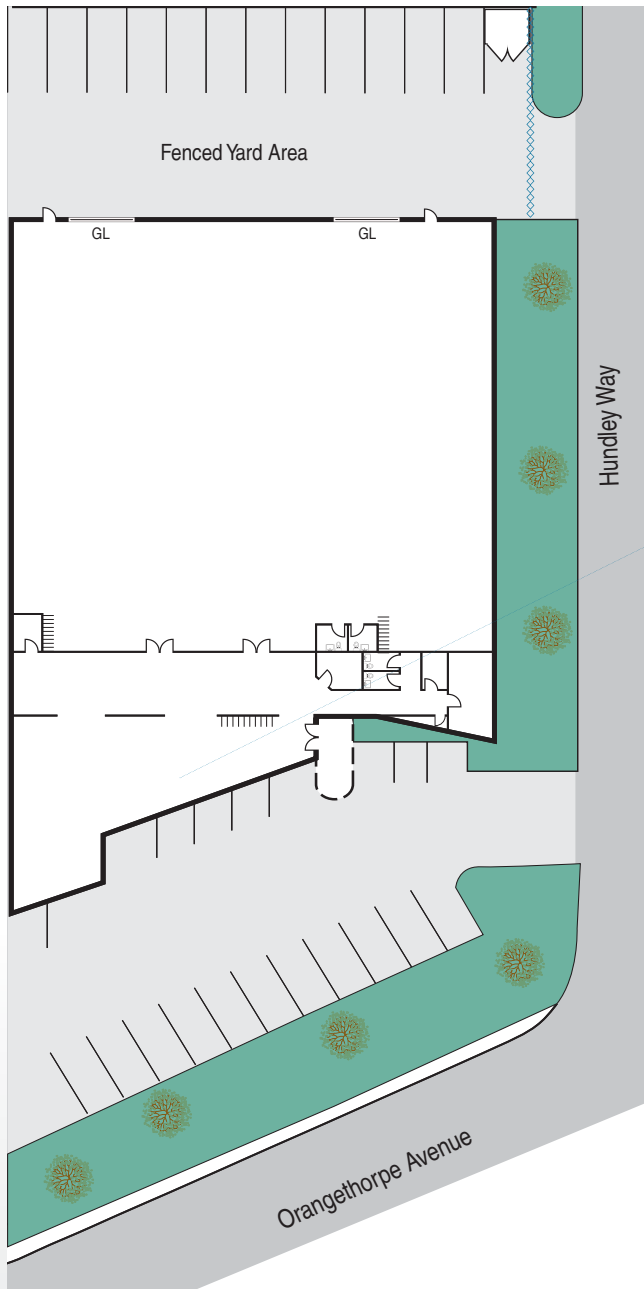
**THE ZEHNER
DAVENPORT**
INDUSTRIAL GROUP

MITCH ZEHNER
Executive Vice President
714.935.2307
mzehner@voitco.com
Lic#00882464

SETH DAVENPORT
Senior Vice President
714.935.2376
sdavenport@voitco.com
Lic#01413387

AVAILABLE +/-15,647 SF FOR LEASE

735 W. ORANGETHORPE AVE, PLACENTIA



Voit
REAL ESTATE SERVICES

THE ZEHNER
DAVENPORT
INDUSTRIAL GROUP

MITCH ZEHNER
Executive Vice President
714.935.2307
mzehner@voitco.com
Lic#00882464

SETH DAVENPORT
Senior Vice President
714.935.2376
sdavenport@voitco.com
Lic#01413387